

04 OTHER MACHINE TOOL ACCESSORIES

**PULL STUDS /
RETENTION
KNOBS**



PG 152-162

**WRENCHES /
SPANNERS**



PG 163-164

**COLLET
NUTS**



PG 165-166

**CNC TURRET
SLEEVES /
CNCLATHE
BUSHINGS**



PG 167-170

**SPINDLE
WIPERS**



PG 171

**TOOL LOCKING
DEVICE**



PG 172

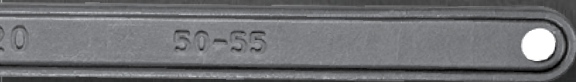
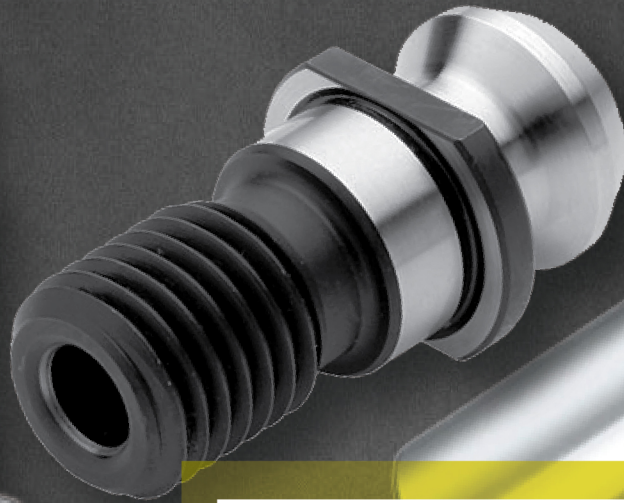


04 CONTENTS

- PULL STUDS / RETENTION KNOBS
- COLLET NUTS
- WRENCHES / SPANNERS
- TOOL LOCKING DEVICE
- SPINDLE WIPERS
- CNC TURRET SLEEVES /
CNCLATHE BUSHINGS



OTHER MACHINE TOOL ACCESSORIES



-QUALITY
ASSURANCE
-COST EFFECTIVE

PULL STUDS / RETENTION KNOBS



FEATURES:

01

Precision Ground Pull Studs

02

Manufactured to the highest standard

03

Individually inspected for highest quality

04

Harden for maximum longevity

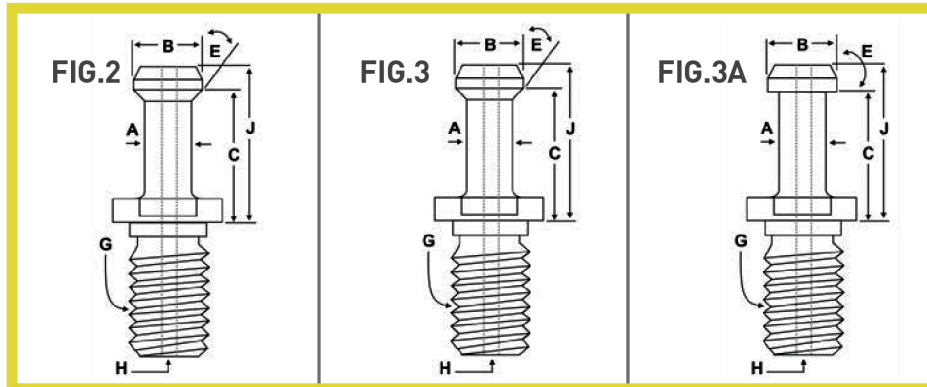
05

Magnetic Particle Crack test is available

06

Tensile and shear requirements per ISO, DIN and JIS standard

PULL STUDS RETENTION KNOBS



BT30-M12-1.75 THREADS-MAS 403 Style or JIS/JMTBA style

NOTE	FIG.	HEAD DIA.B	NECK DIA.A	ANGLE E°	LENGTH C	LENGTH to HEAD J	FLANGE THICK	PART
P30T II 60°-Pilot	3	0.433 (11mm)	0.276 (7mm)	45°	0.709 (18mm)	0.905 (23mm)	0.197 (5mm)	BT30-4500S
P30T III 90°-Pilot				45°				BT30-4500H
Pilot				60°				BT30-6000S
Chiron No Pilot	3A			90°				BT30-9000S
	3	0.472 (12mm)	0.315 (8mm)	75°	0.724 (18.4mm)	0.921 (23.4mm)	0.200 (5.1mm)	BT30-7500H
	2	0.393 (10mm)	0.236 (6mm)	45°	0.630 (16mm)	0.787 (20mm)	-	BT30-3002TRK

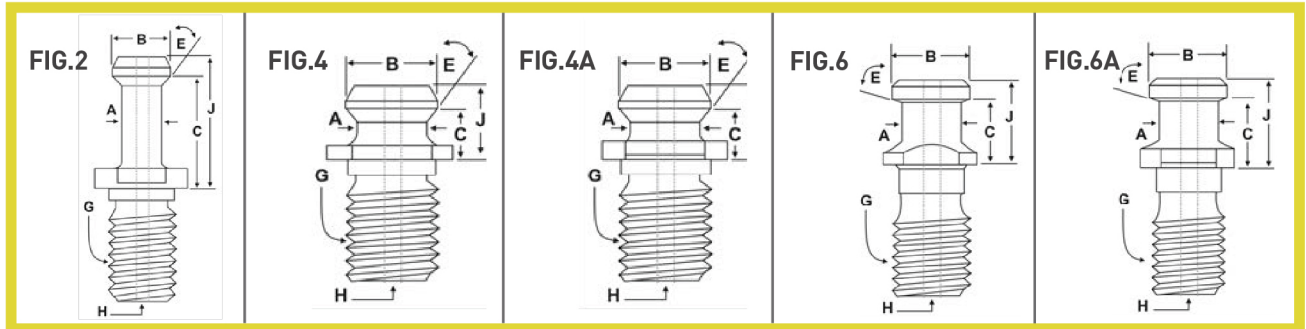
BT35-M12-1.75 THREADS-MAS 403 Style or JIS/JMTBA style

NOTE	FIG.	HEAD DIA.B	NECK DIA.A	ANGLE E°	LENGTH C	LENGTH to HEAD J	FLANGE THICK	PART
Pilot	3	0.540 (13.7 mm)	0.348 (8.8mm)	45°	0.880 (22.4mm)	1.102 (28mm)	0.157 (4mm)	BT35-4500S
Pilot	3			60°				0.192 (4.9mm)
Pilot	3A	0.550 (14 mm)	0.310 (7.9mm)	90°	0.788 (20mm)	0.900 (22.9mm)	0.19	BT35-9000S
Pilot	3A							

BT40-M16-2.00 THREADS-MAS 403 Style or JIS/JMTBA style

NOTE	FIG.	HEAD DIA.B	NECK DIA.A	ANGLE E°	LENGTH C	LENGTH to HEAD J	FLANGE THICK	PART
Pilot	2	0.59 (15mm)	0.394 (10mm)		0.989 (25.1mm)	1.265 (32.1mm)	0.242 (6.1mm)	BT40-4502S
P40T I 45°-Pilot	3			45°	1.102 (28mm)	1.377 (35mm)	0.236 (6mm)	BT40-4500H
P40T I 45°-Pilot	3			60°	0.709 (18mm)	0.905 (23mm)	0.197 (5mm)	BT40-4500S
P40T I 60°-Pilot	3			60°	1.102 (28mm)	1.377 (35mm)	0.236 (6mm)	BT40-6000H
P40T I 60°-Pilot	3			90°	0.709 (18mm)	0.905 (23mm)	0.197 (5mm)	BT40-6000S
P40T I 90°-Pilot	3A			75°	1.102 (28mm)	1.377 (35mm)	0.236 (6mm)	BT40-9000H
P40T I 90°-Pilot	3A			45°	0.709 (18mm)	0.905 (23mm)	0.197 (5mm)	BT40-9000S

PULL STUDS RETENTION KNOBS



BT40 - M16-2.00 THREADS U.S. ANSI STYLE

NOTE	FIG.	HEAD DIA.B	NECK DIA.A	ANGLE E°	LENGTH C	LENGTH to HEAD J	FLANGE THICK	PART
ANSI STD-metric-NoPilot	4				0.440 (11.2mm)	0.640 (16.3mm)	0.120 (3mm)	BT40-4503H
ANSI STD-metric-NoPilot		0.740 (18.8mm)	0.490 (12.5mm)	45°				BT40-4503S
Pilot=0.669	4A				0.550 (14mm)	0.755 (19.2mm)	0.240 (6.1mm)	BT40-4501H
Pilot=0.669								BT40-4501S

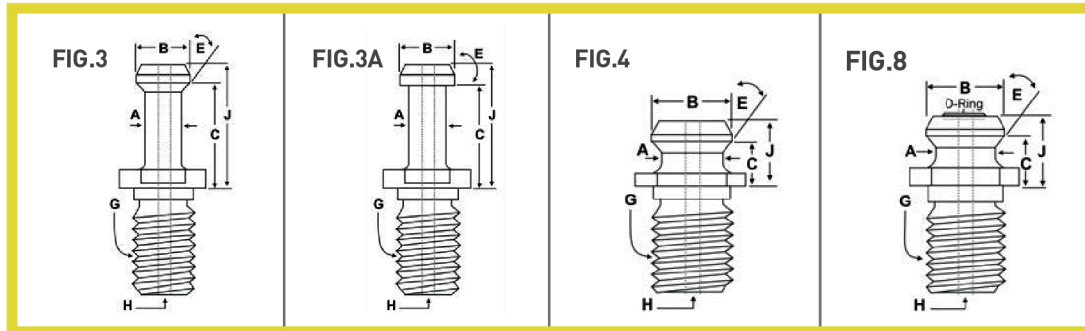
BT40 - M16-2.00 THREADS ISO TPYE A STYLE

NOTE	FIG.	HEAD DIA.B	NECK DIA.A	ANGLE E°	LENGTH C	LENGTH to HEAD J	FLANGE THICK	PART
Pilot	6A						0.275 (7mm)	BT40-7500H
Pilot	6A	0.748 (19mm)	0.551 (14mm)	75°	0.905 (23mm)	1.141 (29mm)	0.275 (7mm)	BT40-7500S
No Pilot	2						-	B30-4020TRK

BT40 - M16-2.00 THREADS DIN 69872 FORM A STYLE

NOTE	FIG.	HEAD DIA.B	NECK DIA.A	ANGLE E°	LENGTH C	LENGTH to HEAD J	FLANGE THICK	PART
DIN A Std Pilot								BT40-7501H
DIN A Std No Pilot	6	0.748 (19mm)	0.551 (14mm)	75°	0.787 (20mm)	1.023 (26mm)	0.157 (4mm)	-

PULL STUDS RETENTION KNOBS



BT45 - M16-2.50 THREADS MAS 403 STYLE OR JIS/JMTBA STYLE

NOTE	FIG.	HEAD DIA.B	NECK DIA.A	ANGLE E°	LENGTH C	LENGTH to HEAD J	FLANGE THICK	PART
P45T I 45°-Pilot	3			45°				BT45-4500S
P45T II 60°-Pilot	3	0.748 (19mm)	0.551 (14mm)	60°	1.22 (31mm)	1.574 (40mm)	0.31 (8mm)	BT45-6000S
P45T III 90°-Pilot	3A			90°				BT45-9000S

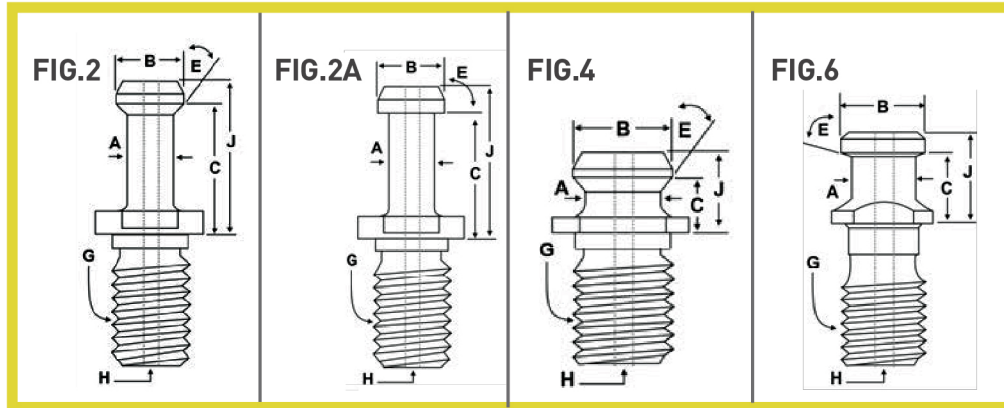
BT50-M24-3.00 THREADS MAS 403 STYLE OR JIS/JMTBA STYLE

NOTE	FIG.	HEAD DIA.B	NECK DIA.A	ANGLE E°	LENGTH C	LENGTH to HEAD J	FLANGE THICK	PART
P50T I 45°-Pilot	3			45°				BT50-4500H
P50T I 45°-Pilot	3			45°				BT50-4500S
P50T II 60°-Pilot	3	0.905 (23mm)	0.669 (17mm)	60°	1.377 (35mm)	1.771 (45mm)	0.394 (10mm)	BT50-6000H
P50T II 60°-Pilot	3			60°				BT50-6000S
P50T III 90°-Pilot	3A			90°				BT50-9000H
P50T III 90°-Pilot	3A			90°				BT50-9000S

BT50-M24-3.00 THREADS - U.S. ANSI STYLE

NOTE	FIG.	HEAD DIA.B	NECK DIA.A	ANGLE E°	LENGTH C	LENGTH to HEAD J	FLANGE THICK	PART
No Pilot	8						0.200 (5.1mm)	BT40-7500H
Std ANSI- Metric	4	1.140 (29mm)	0.820 (20.8mm)	45°	0.700 (17.8mm)	1.000 (25.4mm)	0.209 (5.3mm)	BT40-7500S
Std ANSI- Metric	4						-	B30-4020TRK

PULL STUDS RETENTION KNOBS

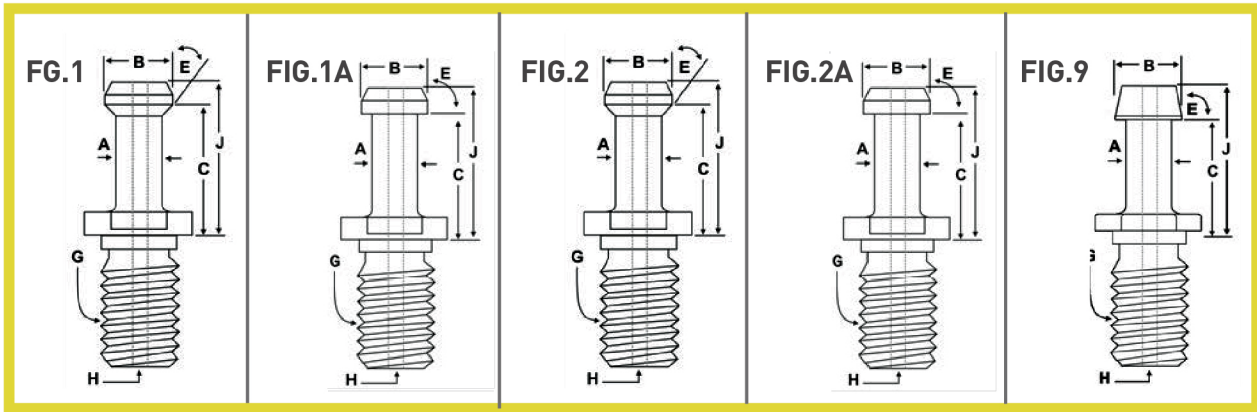


BT50 - M24-3.00 THREADS DIN-69872 FORM 'A' STYLE

NOTE	FIG.	HEAD DIA. B	NECK DIA. A	ANGLE E°	LENGTH C	LENGTH to HEAD J	FLANGE THICK	PART
No Pilot	6	1.101 (28mm)	0.826 (21mm)	75°	0.984 (25mm)	1.338 (34mm)	-	BT40-7500H
Std ANSI- Metric	6	1.101 (28mm)	0.826 (21mm)	75°	0.984 (25mm)	1.338 (34mm)	-	BT40-7500S
Std ANSI- Metric	2A	0.950 (24.1mm)	-	90°	0.905 (23mm)	1.220 (31mm)	0.2 00 (5.1mm)	B30-4020TRK

CAT30 - 1/2" - 13 THREADS U.S. ANSI STYLE

NOTE	FIG.	HEAD DIA. B	NECK DIA. A	ANGLE E°	LENGTH C	LENGTH to HEAD J	FLANGE THICK	PART
ANSI STD No Pilot	4	0.520 (13.2mm)	0.385 (9.8mm)	45°	0.320 (8.1mm)	0.464 (11.8mm)	0.103 (2.6mm)	CAT30-4500H
ANSI STD No Pilot	4	0.520 (13.2mm)	0.385 (9.8mm)	45°	0.320 (8.1mm)	0.464 (11.8mm)	0.103 (2.6mm)	CAT30-4500S
No Pilot	2	0.393 (10mm)	0.236 (6mm)	45°	0.63 (16mm)	0.787 (20mm)	-	CAT30-CATHI -RONINCATH



CAT40 - 5/8" - 11 THREADS MAS403 STYLE OR JIS/JMTBASTYLE

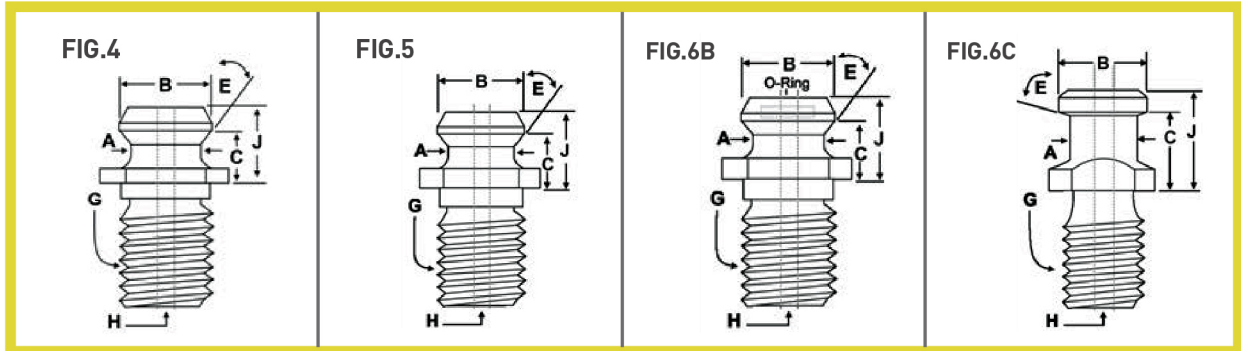
NOTE	FIG.	HEAD DIA. B	NECK DIA. A	ANGLE E°	LENGTH C	LENGTH to HEAD J	FLANGE THICK	PART
No Pilot	2	0.748 (19mm)	0.551 (14mm)	75°	0.905 (23mm)	1.141 (29mm)	-	CAT40-4010TRK
Thin Flange Pilot	1			45°	0.989 (25.1mm)	1.265 (32.1mm)	0.125 (3.2mm)	CAT40-4502H
Thin Flange Pilot	1			45°	0.989 (25.1mm)	1.265 (32.1mm)	0.125 (3.2mm)	CAT40-4502S
Pilot	2			45°	0.989 (25.1 mm)	1.265 (32.1mm)	0.236 (6mm)	CAT40-4501H
Pilot	2			45°	0.989 (25.1 mm)	1.265 (32.1mm)	0.236 (6mm)	CAT40-4501S
No Pilot	2			45°	1.000 (25.4mm)	1.265 (32.1mm)	0.236 (6mm)	CAT40-4504S
Thin Flange Pilot	1			60°	0.992 (25.2mm)	1.259 (32mm)	0.120 (3mm)	CAT40-6006S
Thin Flange Pilot	1			60°	0.992 (25.2mm)	1.259 (32mm)	0.120 (3mm)	CAT40-6006H
No Pilot	2			60°	0.989 (25.1mm)	1.265 (32.1mm)	0.236 (6mm)	CAT40-6000H
Pilot	2	0.589 (15mm)	0.392 (10mm)	60°	0.989 (25.1mm)	1.265 (32.1mm)	0.236 (6mm)	CAT40-6000S
Thin Flange Pilot	1A			90°	0.992 (25.2mm)	1.259 (32mm)	0.120 (3mm)	CAT40-9006S
Thin Flange No Pilot	1A			90°	0.992 (25.2mm)	1.259 (32mm)	0.120 (3mm)	CAT40-9006H
Shorter Than other C40	2A			90°	0.708 (18mm)	0.98 (24.9mm)	0.200 (5.1mm)	CAT40-MITSUI
Pilot	9			90°	0.775 (19.7mm)	1.051 (26.7mm)	0.200 (5.1mm)	CAT40-9001S
Pilot	2A			90°	0.989 (25.1mm)	1.265 (32.1mm)	0.236 (6mm)	CAT40-9000H
Pilot	2A			90°	0.989 (25.1mm)	1.265 (32.1mm)	0.236 (6mm)	CAT40-9000S
Pilot	1	0.594 (15.1mm)	0.405 (10.3mm)	45°	1.139 (28.9mm)	1.436 (36.5mm)	0.187 (4.8mm)	CAT40-4503H
No Pilot	1			45°	1.139 (28.9mm)	1.436 (36.5mm)	0.187 (4.8mm)	CAT40-4503S

CAT40 - 5/8" - 11 THREADS MAS403 STYLE OR JIS/JMTBASTYLE

NOTE	FIG.	HEAD DIA. B	NECK DIA. A	ANGLE E°	LENGTH C	LENGTH to HEAD J	FLANGE THICK	PART
No Pilot	1	0.590 (15mm)	-	45°	0.992 (25.2mm)	1.259 (32mm)	0.120 (3mm)	CAT40-4500B
No Pilot	-	0.590 (15mm)	-	45°	0.992 (25.2mm)	1.259 (32mm)	0.120 (3mm)	CAT40-HITACHI
No Pilot	1	0.590 (15mm)	-	60°	0.992 (25.2mm)	1.259 (32mm)	0.120 (3mm)	CAT40-6000B
No Pilot	1A	0.590 (15mm)	-	90°	0.992 (25.2mm)	1.259 (32mm)	0.120 (3mm)	CAT40-9000B

PULL STUDS

RETENTION KNOBS



CAT40 - 5/8" - 11 THREADS

U.S. ANSI STYLE

NOTE	FIG.	HEAD DIA. B	NECK DIA. A	ANGLE E°	LENGTH C	LENGTH to HEAD J	FLANGE THICK	PART
ANSI STD No Pilot	4							CAT40-4500SG
ANSI STD Pilot	4							CAT40-4500H
ANSI STD Pilot	4	0.740 (18.8mm)	0.490 (12.5mm)	45°	0.440 (11.2mm)	0.640 (16.3mm)	0.120 (3mm)	CAT40-4500S
ANSI PILOT	5							CAT40-4505H
ANSI PILOT	5							CAT40-4505S

CAT40 - 5/8" - 11 THREADS

ISO TYPE A STYLE

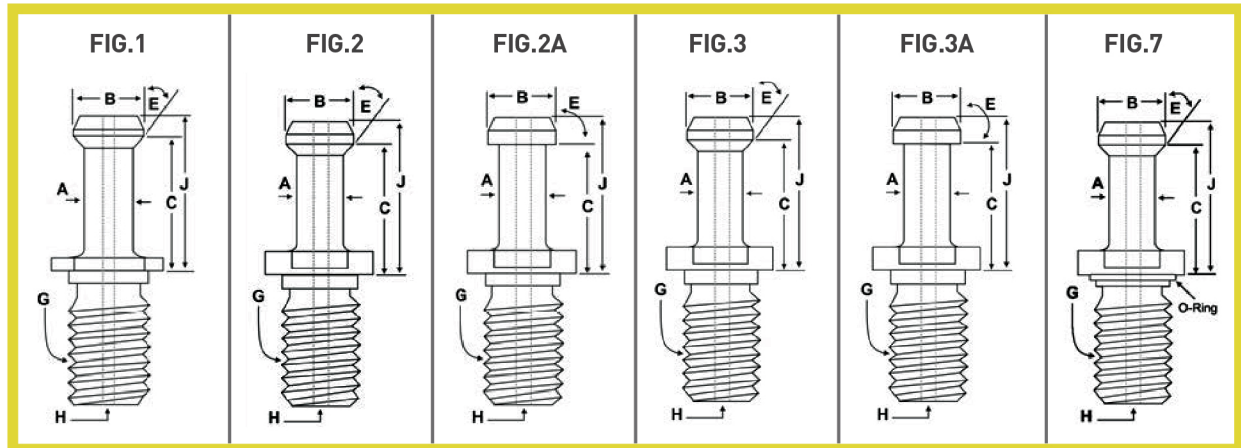
NOTE	FIG.	HEAD DIA. B	NECK DIA. A	ANGLE E°	LENGTH C	LENGTH to HEAD J	FLANGE THICK	PART
ISO A-Inch No Pilot	6B	0.747 (19mm)	0.551 (14mm)	75°	0.791 (20.1mm)	1.030 (26.2mm)	0.280 (7.1mm)	CAT40-7500H
ISO A-Inch No Pilot								CAT40-7500S

CAT40 - 5/8" - 11 THREADS

DIN 69872 FORM A STYLE

NOTE	FIG.	HEAD DIA. B	NECK DIA. A	ANGLE E°	LENGTH C	LENGTH to HEAD J	FLANGE THICK	PART
DIN A Std-Inch No Pilot	6C	0.748 (19mm)	0.551 (14mm)	75°	0.787 (20mm)	1.023 (26mm)	0.157 (4mm)	CAT40-7551H

PULL STUDS RETENTION KNOBS

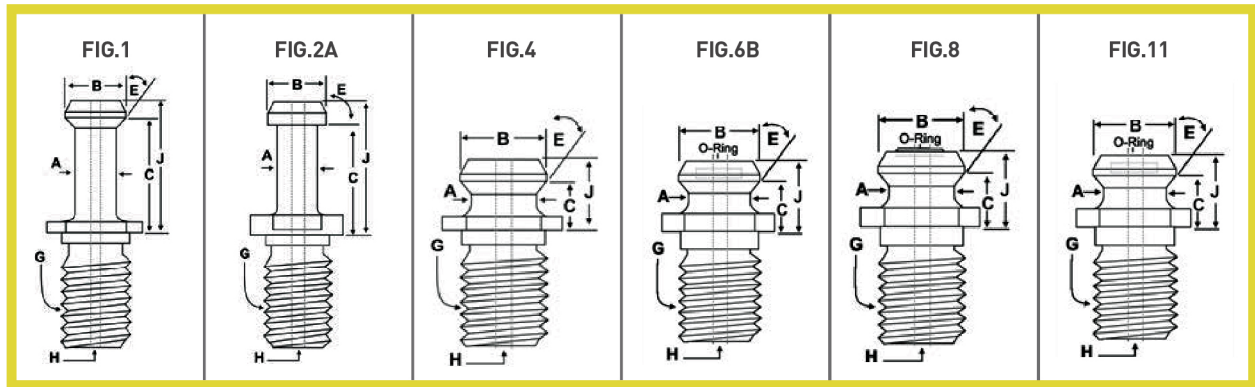


CAT45 - 3/4" - 10 THREADS MAS 403 STYLE OR JIS / JMTBA STYLE

NOTE	FIG.	HEAD DIA. B	NECK DIA. A	ANGLE E°	LENGTH C	LENGTH to HEAD J	FLANGE THICK	PART
No Pilot	2			45°				CAT45-4500S
No Pilot	2	0.750 (19.1mm)	0.551 (14mm)	60°	1.230 (31.3mm)	1.580 (40.1mm)	0.310 (7.88mm)	CAT45-6000S
No Pilot	2A			90°				CAT45-9000S

CAT50 - 1" - 8 THREADS MAS 403 STYLE OR JIS / JMTBA STYLE

NOTE	FIG.	HEAD DIA. B	NECK DIA. A	ANGLE E°	LENGTH C	LENGTH to HEAD J	FLANGE THICK	PART
P50T I 45°-Inch No Pilot	1	0.747 (19mm)	0.551 (14mm)	45°	0.787 (20mm)	1.026 (26.1mm)	0.201 (5.1mm)	CAT50-4502H
P50T I 45°-Inch Pilot	3			45°		1.779 (45.2mm)		CAT50-4501H
P50T I 45°-Inch No Pilot	7			45°		1.779 (45.2mm)		CAT50-4501R
P50T I 45°-Inch Pilot	3	0.905 (23mm)	0.669 (17mm)	45°		1.779 (45.2mm)	0.390 (9.9mm)	CAT50-4501S
P50T II 60°-Inch Pilot	3			60°		1.771 (45mm)		CAT50-6000H
P50T II 60°-Inch Pilot	3			60°		1.771 (45mm)		CAT50-6000S
No Pilot	2A	0.910 (23.1mm)	0.667 (16.9mm)	90°	1.385 (35.2 mm)	1.779 (45.2mm)	0.690 (17.5mm)	CAT50-MAZAK
P50T III 90°- Inch-Pilot	3A	0.905 (23mm)	0.669 (17mm)	90°		1.771 (45mm)	0.390 (9.9mm)	CAT50-9000H
P50T III 90°- Inch-Pilot	3A			90°		1.771 (45mm)	0.392 (9.96mm)	CAT50-9000S
P50T I 45°-Inch No Pilot	-	0.900 (22.9mm)	-	45°		1.779 (45.2mm)		CAT50-HITACHI
P50T I 45°-Inch Pilot	3			45°		1.779 (45.2mm)		CAT50-4500B
P50T II 60°-Inch Pilot	3	0.990 (25.2mm)	-	60°		1.779 (45.2mm)	0.390 (9.91mm)	CAT50-6000B
P50T III 90°- Inch-Pilot	3A			90°		1.779 (45.2mm)		CAT50-9000B



≡ CAT 50-1/8"-11 THREADS U.S. ANSI STYLE

NOTE	FIG.	HEAD DIA. B	NECK DIA. A	ANGLE E°	LENGTH C	LENGTH to HEAD J	FLANGE THICK	PART
Pilot	11				0.700 (17.8mm)		0.200 (5.08mm)	CAT50-4503R
Integrex, Pilot, Ring	8				0.700 (17.8mm)		0.200 (5.08mm)	CAT50-4506R
Integrex, Pilot, No Ring	8				0.700 (17.8mm)		0.200 (5.08mm)	CAT50-4506H
ANSI STD No Pilot	4	1.140 (29mm)	0.820 (20.8mm)	45°	0.706 (17.9mm)	1.000 (25.4mm)	0.200 (5.1mm)	CAT50-4500H
No Pilot	8				0.706 (17.9mm)		0.200 (5.1mm)	CAT50-4500R
ANSI STD No Pilot	4				0.706 (17.9mm)		0.204 (5.2mm)	CAT50-4500S
No Pilot	4				0.700 (17.8mm)		0.200 (5.1mm)	CAT50-STDB

≡ CAT 50-1/8"-11 THREADS ISO STD. TYPE A STYLE

NOTE	FIG.	HEAD DIA. B	NECK DIA. A	ANGLE E°	LENGTH C	LENGTH to HEAD J	FLANGE THICK	PART
ISO Std. A Inch-No Pilot	6B	1.100 (28mm)	0.826 (21mm)	75°	0.992 (25.2mm)	1.350 (34.3mm)	0.280 (7.1mm)	CAT50-7540H

≡ CAT 50-1/8"-11 THREADS DIN 69872 FORM A STYLE

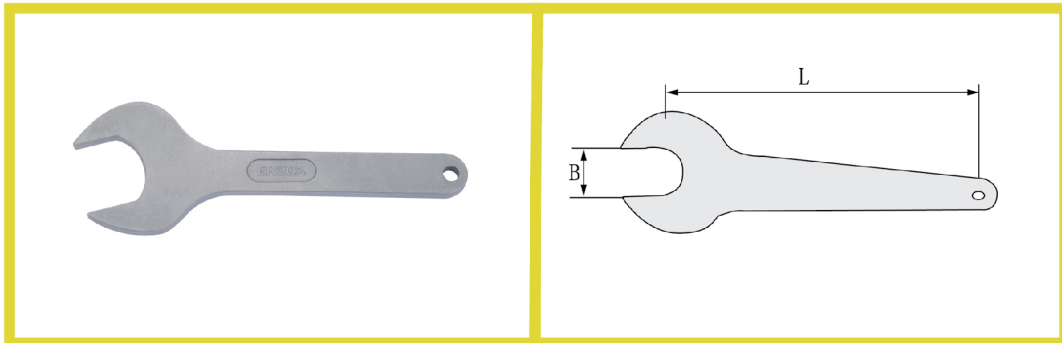
NOTE	FIG.	HEAD DIA. B	NECK DIA. A	ANGLE E°	LENGTH C	LENGTH to HEAD J	FLANGE THICK	PART
DIN Std. A Inch-Pilot	1	1.100 (28mm)	0.826 (21mm)	75°	0.977 (24.8mm)	1.338 (34mm)	-	CAT50-7550H

≡ CAT 50-1/8"-11 THREADS MITSUI STYLE

NOTE	FIG.	HEAD DIA. B	NECK DIA. A	ANGLE E°	LENGTH C	LENGTH to HEAD J	FLANGE THICK	PART
MITSUI. No Pilot	1		0.706 (17.9mm)		0.903 (22.9mm)	1.218 (30.9mm)	#N/A	CAT50-MS5034TRK
MITSUI No Pilot	2A	0.940 (23.9mm)	0.708 (18mm)	90°	0.905 (23mm)	1.220 (31mm)	0.200 (5.1mm)	CAT50-MITSUI

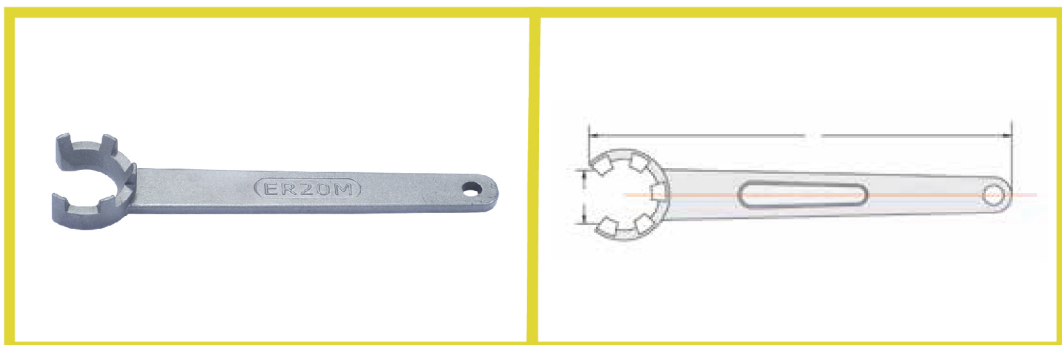
WRENCHES

HEX SPANNER / WRENCH



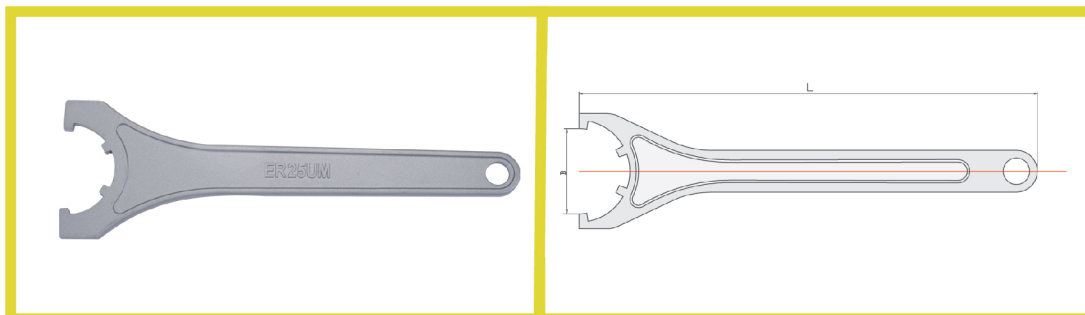
ITEM NUMBER	B	L	CLAMPING NUT
ER11-A	17	110	ER11-A
ER16-A	25	120	ER16-A
ER20-A	30	130	ER20-A

MINI SPANNER / WRENCH



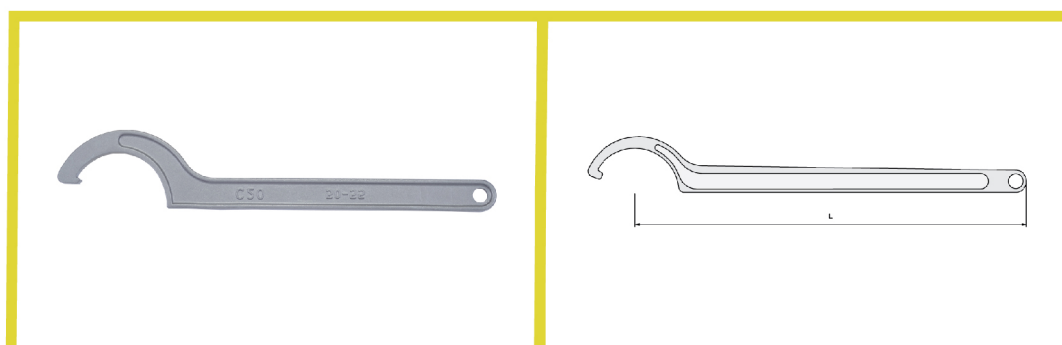
ITEM NUMBER	B	L	CLAMPING NUT
ER8-M	7.5	70	ER8-M
ER11-M	11	90	ER11-M
ER16-M	15	110	ER16-M
ER20-M	19.5	120	ER20-M
ER25-M	25	130	ER25-M

UM-SPANNER WRENCH



ITEM NUMBER	D(mm)	L(mm)	T
ER16-UM	26	180	ER16-UM
ER20-UM	30	190	ER20-UM
ER25-UM	37	210	ER25-UM
ER32-UM	46.5	250	ER32-UM
ER40-UM	58	290	ER40-UM
ER50-UM	74	350	ER50-UM

C-HOOK SPANNER / WRENCH

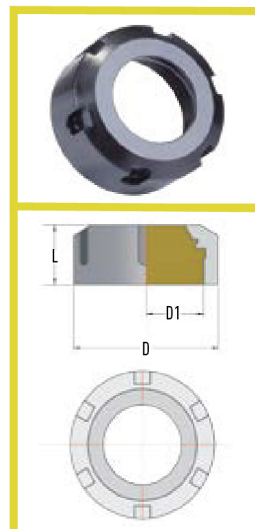


ITEM NUMBER	B	L	CLAMPING NUT
ER25-C	168	38-42	ER25-UM
ER32-C	190	45-52	ER32-UM
ER40-C	210	55-63	ER40-UM
ER50-C	240	78-85	ER50-UM

COLLET NUTS

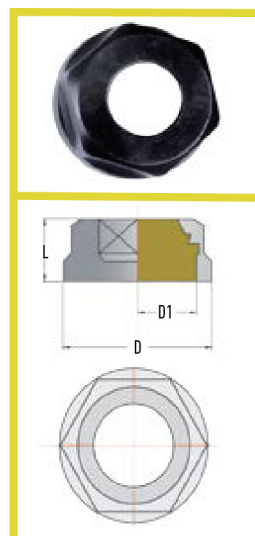
ER SLOTTED UM TYPE NUTS

ITEM NUMBER	D(mm)	D1(mm)	L(mm)	T	WT(kg)
ER16-UM	32	26	17	M22X1.5	0.05
ER20-UM	35	29	19	M25X1.5	0.1
ER25-UM	42	36	20	M32X1.5	0.14
ER32-UM	50	44	22.5	M40X1.5	0.2
ER40-UM	63	57	25.5	M50X1.5	0.3
ER50-UM	78	71	35.5	M64X2	0.5



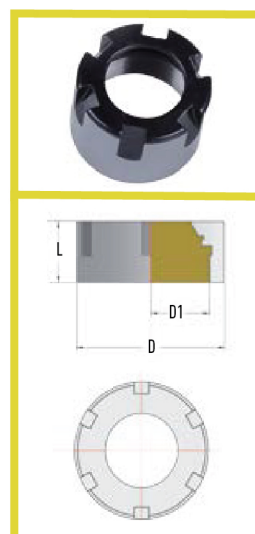
ER HEX NUTS

ITEM NUMBER	D(mm)	D1(mm)	L(mm)	T	WT(kg)
ER11A	19	17	11.3	M14X0.75	0.005
ER16A	28	25	17.5	M22X1.5	0.01
ER20A	34	30	19	M25X1.5	0.05



ER MINI NUTS

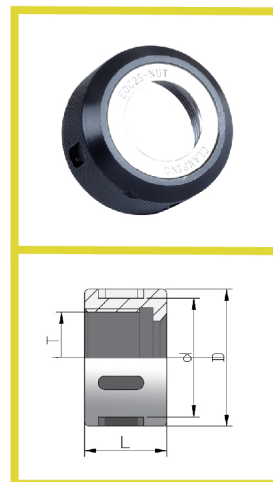
ITEM NUMBER	D(mm)	D1(mm)	L(mm)	T	WT(kg)
ER8M	12	10	10	M10X0.75	0.005
ER8M	16	12	12	M13X0.75	0.01
ER16M	22	17.2	18	M19X1	0.05
ER20M	28	22.5	19	M24X1	0.05
ER25M	35	28.6	20	M30X1	0.08



OZ-COLLET NUTS

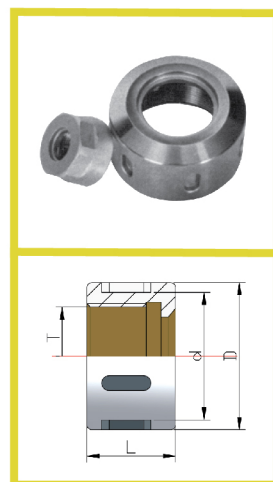
TYPE NUTS-COLLET NUTS

ITEM NUMBER	D(mm)	D1(mm)	L(mm)
OZ8	26	19	M20X1.5
OZ10	30	19	M22X1.5
OZ12	35	20	M27X1.5
OZ16	43	24	M33X1.5
OZ20	50	28	M42X2
OZ25	60	30	M48X2
OZ32	72	33.5	M60X2.5
OZ40	85	37	M68X2.5
OZ50	100	43	M80X2.5



SK COLLET NUTS

ITEM NUMBER	D(mm)	D1(mm)	L(mm)	T
SK06	18.1	20	15	M15.5X1
SK10	25.4	28	17	M21.5X1
SK16	35	40	24	M32X1.5
SK20	43	48	27	M40X1.5
SK25	50	55	30	M45X1.5



FIX THE DIAGRAM

CNC TURRET SLEEVE / CNC LATHE BUSHING



FEATURES:

01

Ground Finish

02

Inch & Metric both sizes available

04

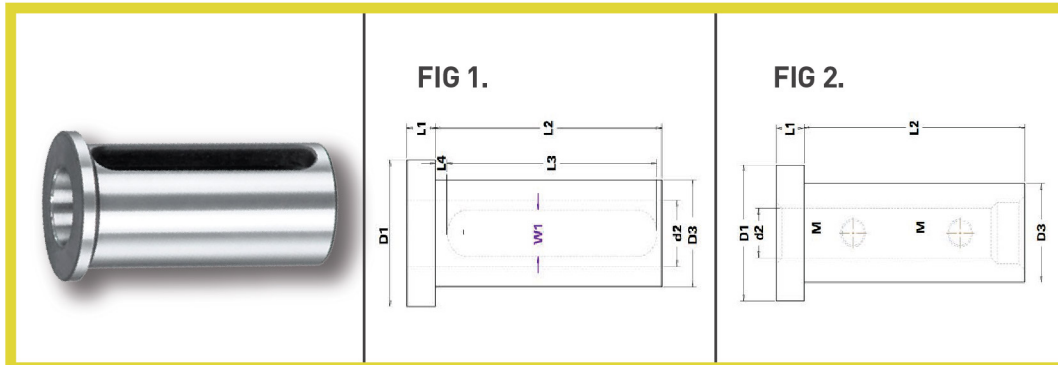
Wrench flats for easy removal

05

Type and size clearly marked on surface of head

CNC TURRET SLEEVE

CNC LATHE BUSING (METRIC SIZES)



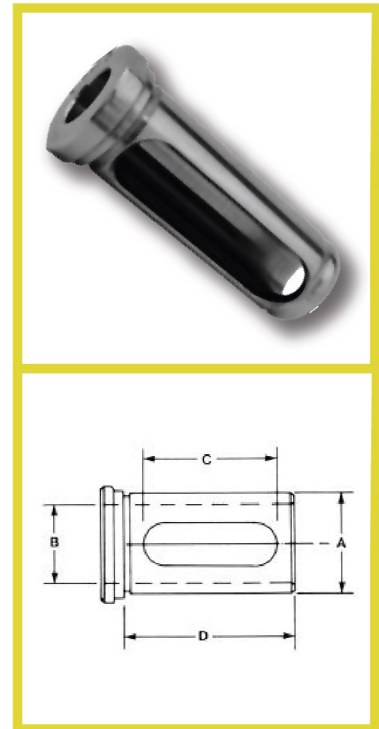
ITEM NUMBER	OD (D3)	ID (D2)	OD (D1)	W1	L1	L2	L3	L4	M THREAD	FIG.
TS-16-8	16	8	22	-	5	40	-	-	M4	F2
TS-16-10	16	10	22	7	5	40	32	3	-	F1
TS-20-8	20	8	26	-	5	50	-	-	M5	F2
TS-20-10	20	10	26	-	5	50	-	-	M5	F2
TS-20-12	20	12	26	9	5	50	42	3	-	F1
TS-25-6	25	6	32	-	5	50	-	-	M5	F2
TS-25-8	25	8	32	-	5	50	-	-	M6	F2
TS-25-10	25	10	32	-	5	50	-	-	M6	F2
TS-25-12	25	12	32	-	5	50	-	-	M6	F2
TS-25-16	25	16	32	10	5	50	42	3	-	F1
TS-32-6	32	6	38	-	5	60	-	-	M5	F2
TS-32-8	32	8	38	-	5	60	-	-	M6	F2
TS-32-10	32	10	38	-	5	60	-	-	M8	F2
TS-32-12	32	12	38	-	5	60	-	-	M8	F2
TS-32-16	32	16	38	10	5	60	52	3	-	F1
TS-32-20	32	20	38	10	5	60	52	3	-	F1
TS-32-25	32	25	38	10	5	60	52	3	-	F1
TS-40-6	40	6	48	-	5	80	-	-	M5	F2
TS-40-8	40	8	48	-	5	80	-	-	M6	F2
TS-40-10	40	10	48	-	5	80	-	-	M8	F2
TS-40-12	40	12	48	-	5	80	-	-	M6	F2
TS-40-16	40	16	48	12	5	80	74	2	-	F1
TS-40-20	40	20	48	12	5	80	74	2	-	F1
TS-40-25	40	25	48	12	5	80	74	2	-	F1
TS-40-32	40	32	48	12	5	80	74	2	-	F1
TS-50-10	50	10	60	-	8	92	-	-	M8	F2
TS-50-12	50	12	60	-	8	92	-	-	M8	F2
TS-50-16	50	16	60	12	8	92	80	4	-	F1
TS-50-20	50	20	60	12	8	92	80	4	-	F1
TS-50-25	50	25	60	12	8	92	80	4	-	F1
TS-50-32	50	32	60	12	8	92	80	4	-	F1
TS-50-40	50	40	60	12	8	92	80	4	-	F1

CNC TURRET SLEEVE

CNC LATHE BUSING (INCH SIZES)

TYPE-C

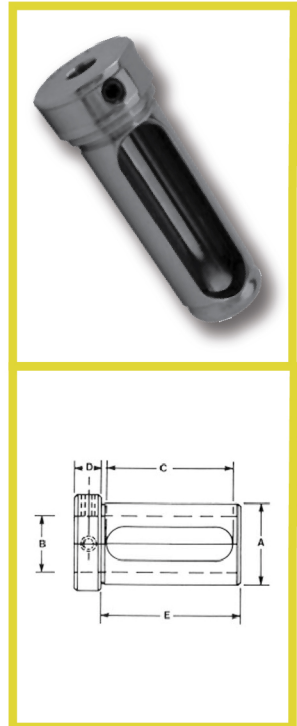
ITEM NUMBER	OD A	SLOT LENGTH C	LENGTH UNDER HEAD D	ID B
TSC-07-0250				1/4"
TSC-07-0312				5/16"
TSC-07-0375	3/4"	1-7/8"	2-1/4"	3/8"
TSC-07-0500				1/2"
TSC-10-0250				1/4"
TSC-10-0312				5/16"
TSC-10-0375	1"	2-3/8"	2-3/4"	3/8"
TSC-10-0500				1/2"
TSC-10-0625				5/8"
TSC-10-0750				3/4"
TSC-12-0375				3/8"
TSC-12-0500				1/2"
TSC-12-0625	1-1/4"	2-7/8"	3-1/4"	5/8"
TSC-12-0750				3/4"
TSC-12-0875				7/8"
TSC-12-0100				1"
TSC-15-0375				3/8"
TSC-15-0500				1/2"
TSC-15-0625	1-1/2"	3"	3-3/8"	5/8"
TSC-15-0750				3/4"
TSC-15-0875				7/8"
TSC-15-0100				1"
TSC-15-1250				1-1/4"
TSC-17-0500				1/2"
TSC-17-0625				5/8"
TSC-17-0750	1-3/4"	3-1/8"	3-1/2"	3/4"
TSC-17-0875				7/8"
TSC-17-0100				1"
TSC-17-1250				1-1/4"
TSC-17-1500				1-1/2"
TSC-20-0500				1/2"
TSC-20-0625				5/8"
TSC-20-0750	2"	3-5/8"	4"	3/4"
TSC-20-0875				7/8"
TSC-20-0100				1"
TSC-20-1250				1-1/4"
TSC-20-1500				1-1/2"
TSC-20-1750				1-3/4"



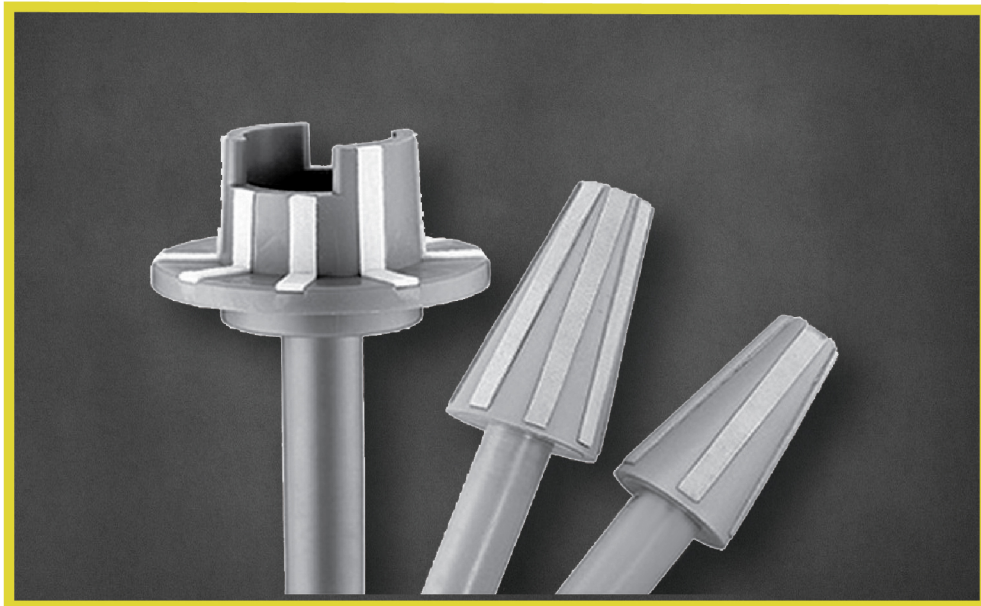
CNC TURRET SLEEVE (INCH SIZES)

TYPE-Z

ITEM NUMBER	OD A	SLOT LENGTH C	LENGTH UNDER HEAD D	HEAD THICK D	ID B
TSZ-07-0250					1/4"
TSZ-07-0312					5/16"
TSZ-07-0375	3/4"	1-7/8"	2-1/4"	1/2"	3/8"
TSZ-07-0500					1/2"
TSZ-10-0250					1/4"
TSZ-10-0312					5/16"
TSZ-10-0375	1"	2-5/8"	2-3/4"	1/2"	3/8"
TSZ-10-0500					1/2"
TSZ-10-0625					5/8"
TSZ-10-0750					3/4"
TSZ-12-0375					3/8"
TSZ-12-0500					1/2"
TSZ-12-0625	1-1/4"	2-7/8"	3-1/4"	5/8"	5/8"
TSZ-12-0750					3/4"
TSZ-12-0875					7/8"
TSZ-12-0100					1"
TSZ-15-0375					3/8"
TSZ-15-0500					1/2"
TSZ-15-0625	1-1/2"	3"	3-3/8"	3/4"	5/8"
TSZ-15-0750					3/4"
TSZ-15-0875					7/8"
TSZ-15-0100					1"
TSZ-15-1250					1-1/4"
TSZ-17-0500					1/2"
TSZ-17-0625					5/8"
TSZ-17-0750	1-3/4"	3-1/8"	3-1/2"	3/4"	3/4"
TSZ-17-0875					7/8"
TSZ-17-0100					1"
TSZ-17-1250					1-1/4"
TSZ-17-1500					1-1/2"
TSZ-20-0500					1/2"
TSZ-20-0625					5/8"
TSZ-20-0750	2"	3-5/8"	4"	3/4"	3/4"
TSZ-20-0875					7/8"
TSZ-20-0100					1"
TSZ-20-1250					1-1/4"
TSZ-20-1500					1-1/2"
TSZ-20-1750					1-3/4"



SPINDLE WIPER



FEATURES:

01

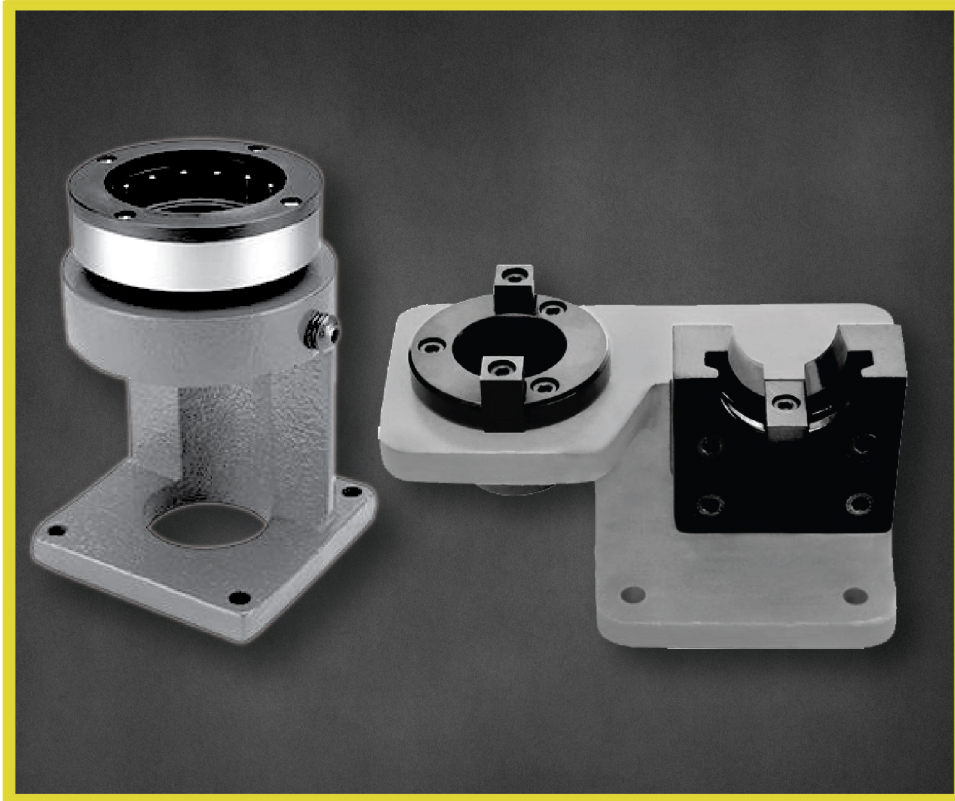
Two materials: non-woven fabric and wool. The latter can prevent static electricity when cleaning the spindle taper and has better use life and cleaning effect.

02

Type: #30, #40, #50 and HSK.

TOOL LOCKING DEVICE

-BT, SK, CAT & HSK



ITEM NUMBER	TYPE
BT30-TLD	BT30
BT40-TLD	BT40
BT50-TLD	BT50
SK40-TLD	SK40
SK50-TLD	SK50
CAT40-TLD	CAT40
CAT50-TLD	CAT50
HSK63A-TLD	HSK63A
HSK100A-TLD	HSK100A

MAINTAINING EQUAL & ACCURATE PRECISION ACROSS

- ACCU-FIX



EMAIL- SALES@ACCUFIXTOOLS.COM

ADDRESS - 730 MANJUSAR GIDC,SAVLI,
VADODARA - 391775,GUJARAT, INDIA

MOBILE - +91-7567975718



- COLLETS
- TOOL HOLDERS
- STRAIGHT SHANK
- MACHINE TOOL ACCESSORIES

ACCU-FIX[®]
PRECISION TOOLS PVT. LTD.